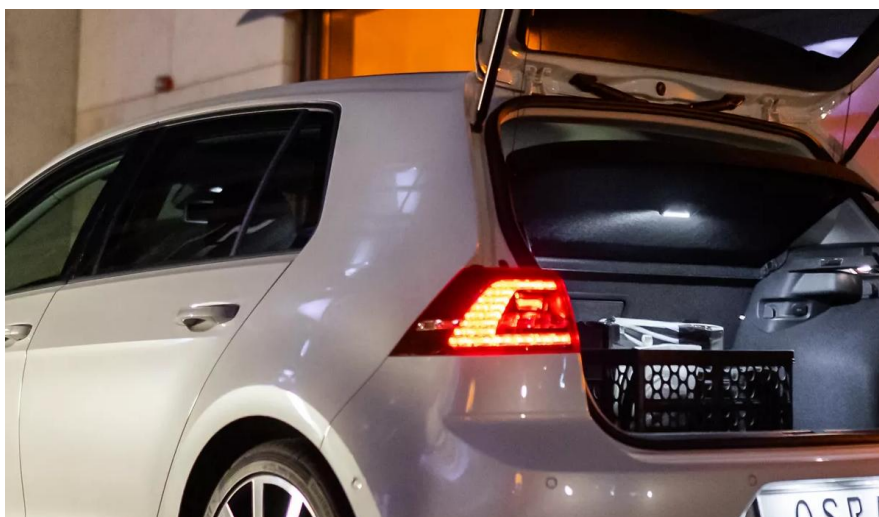


LEDambient Trunk Light



Universal LED trunk light with acceleration and brightness sensor

For higher visibility in everyday situations



Multi-function 2 in 1

Applicable as trunk and torch light



Easy car side fixation via magnet and additional mounting plate

Strong magnet for a quick attachment



2 years OSRAM guarantee¹⁾ For precise conditions refer to: www.osram.com/am-guarantee

Powerful performance and exceptionally long service life



精确照明汽车内饰

Introducing the universal LEDambient Trunk Light, the perfect companion for your car's storage space. Packed with advanced features and designed to enhance your convenience, this versatile light will transform the way you use the trunk. Featuring an acceleration and brightness sensor, the trunk light boasts an automatic light function that activates as soon as you open the car trunk. Our light illuminates your trunk instantly, making it effortless to find what you need. With both automatic and manual functionality, you have complete control over the lighting. With a color temperature of up to 6,000K, the trunk light provides a bright and clear illumination, allowing you to see every detail in your trunk. Very practical: With its 2 in 1 multifunction, the light can be used as an inspection lamp and as a torch light. In addition, equipped with a rechargeable 1500mAh battery, the trunk light offers long-lasting performance. The included USB-C cable allows for convenient charging, ensuring you're always prepared. Thanks to the easy car side fixation via the magnet and additional mounting plate, an easy installation is included. Simply attach the light to your car's interior using the strong magnet or the included mounting plate, and you're ready to go. The powerful magnet ensures a secure attachment, so you never have to worry about the light falling or moving while you're on the road. Trust in the quality and durability of the universal LED trunk light - OSRAM provides a 2-year guarantee¹⁾. 1) For precise conditions refer to: www.osram.com/am-guarantee

产品数据表

技术参数

Product information

Order reference	LEDINT106
-----------------	-----------

电参数

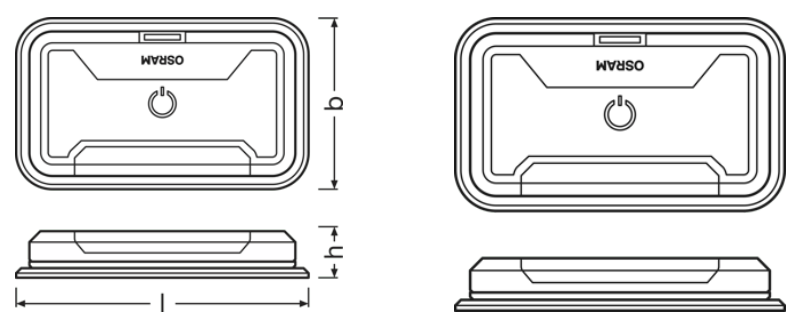
标称功率	30.00 W
标称电压	3.7 V

光度数据

色温	6000 K
光通量	40 lm

尺寸和重量

--



产品重量	100.00 g
长度	108.0 mm
宽度	17.5 mm
高度	63.0 mm

寿命

使用寿命 Tc	1000 h
Guarantee	2 年

认证与标准

标准	CE
----	----

特定分类

Order reference	LEDINT106
-----------------	-----------

产品数据表

Environmental information




Information according Art. 33 of EU Regulation (EC) 1907/2006 (REACH)	
Date of Declaration	07-03-2024
Primary Article Identifier	4062172240062
Candidate List Substance 1	No declarable substances contained
Declaration No. in SCIP database	No declarable substances contained

物流数据

产品代码	产品描述	包装单位 (件/单位)	尺寸 (长 x 宽 x 高)	体积	毛重
4062172240062	LEDambient Trunk Light	纸盒 1	65 mm x 19 mm x 137 mm	0.17 dm ³	141.00 g
4062172240079	LEDambient Trunk Light	箱 10	235 mm x 114 mm x 107 mm	2.87 dm ³	1600.00 g

这里所提到的产品编码代表最小订购数量。一个整件包装含有一个或多个单一产品。请您在下单时，按一个或多个整件数下单。

下载数据

文件	
	User instruction LEDambient TRUNK LIGHT
	电影应用 LEDambient Trunk Light LEDINT106 Produkt Video DE
	电影应用 LEDambient Trunk Light LEDINT106 Product Video IT

安全建议

For detailed application information, please refer to the product data sheet and the user instruction

应用建议

更多详细应用信息和图形,请参阅产品数据表。

免责声明

更改恕不另行通知。遗漏错误不承担任何责任。总是确保使用最新的信息。

